



Super Skid HSS Series

Hot-Water Pressure Washers

#1 in North America for
High-Pressure Cleaning Equipment

Diesel-Fired / Diesel Engine

Upright, diesel-fired burner with stainless-steel coil skin is highly efficient and maintains constant hot water using diesel fuel

Thermal rupture disk protects machine and user from thermal expansion

Adjustable high-pressure detergent injection ensures high-pressure sudsing for better cleaning

Water resistant control panel includes adjustable temperature control, heavy-duty heater switch, hour meter, volt meter and keyed ignition switch

Steam combination control for more efficient cleaning of oils and grease

2000 Watt Generator

Ready plumbed for connection to remote water tank

Large float tank maintains constant pressure and flow while preventing sediment from entering the machine's components

48 Gallon fuel tank for long hours of use – includes fuel gauge in cap

Model HSS-102589E:
9.5 GPM @ 2500 PSI

Hotsy® triplex, tri-belt drive, positive-displacement pump carries a 7-year warranty



Powered by **Lombardini** liquid cooled diesel engines



3/4-inch schedule 80 heating coil carries a 5-year warranty

Rugged square tube frame (standard on all HSS Series models) protects machine's vital components

Fuel/water separator prolongs fuel pump life

50-ft. of two-wire, heavy-duty abrasion resistant hose

Heavy-duty trigger gun and wand with insulated cool grips

FEATURES

- Diesel-Fired and Diesel Powered / Belt Drive
- 4.8 to 9.5 GPM / 2500 to 3200 PSI
- Completely Self-Contained
- All models feature 2000 Watt Generator

www.Hotsy.com

Nothing Cleans Like a Hotsy!

Super Skid HSS Series Hot Water Pressure Washers

■ Diesel-Fired / Diesel Powered ■ 4.8 to 9.5 GPM / 2500 to 3200 PSI ■ Belt Drive / Electric Start ■ Completely Self-Contained

Designed for tough, industrial cleaning.

SPECIFICATIONS

BELT DRIVE

MODEL	GPM	PSI	DIESEL ENGINE	CC's (HP)	BURNER	BTU / HR	PUMP MODEL	HOSE	DIMENSIONS	SHIP WT (lbs)
HSS-503089E	4.8	3000	Kohler	686 (16.8)	120V AC	620,000	Triplex HHC930R.1	50'-3/8"	66"l x 37"w x 53"h	1580
HSS-603289E	6.3	3200	Kohler	1028 (26.1)	120V AC	620,000	Triplex HX8030R.1	50'-3/8"	66"l x 37"w x 53"h	1650
HSS-803089E	7.8	3000	Kohler	1028 (26.1)	120V AC	920,000	Triplex HX8030R.1	50'-1/2"	73"l x 37"w x 64"h	1990
HSS-102589E	9.5	2500	Kohler	1028 (26.1)	120V AC	920,000	Triplex HX1025R.1	50'-1/2"	73"l x 37"w x 64"h	1990

All Models are Electric Start and include a 2000W Generator 12V battery is required for all models, but is not supplied



Clean better with Hotsy detergents

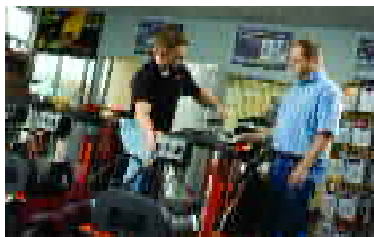
Hotsy pressure washers and parts washers clean best when matched with specially formulated Hotsy detergents. More than 40 liquids and powders meet every cleaning need imaginable. Nearly all contain Hotsy's exclusive advanced-formula HCC additives to help prevent scale build-up and to fight corrosion in your equipment. Most Hotsy detergents are USDA and Canadian Agriculture approved. All are highly concentrated, so a little goes a long way.

Spend some time with a Hotsy Expert

Hotsy has more than 130 local distributors in North America, all factory-trained to properly evaluate your high-pressure cleaning needs.

Over 80% of Hotsy's distributors have been supporting Hotsy systems for more than 20 years.

This seasoned network of local application specialists will ensure you get the safest, most effective and most efficient cleaning solution to your specific cleaning need.



Hotsy Accessories customize your application for top performance

High-pressure turbo nozzles



High-pressure hoses from 30 to 150-ft. lengths

Distributed by:



Tel: (800) 525-1976 Fax: (888) 880-9631
 www.Hotsy.com email: info@Hotsy.com
 P/N 8.914-184.0 Effective 9/10 Specifications and product descriptions subject to change without notice. ©2010 Hotsy



NOTE: We are constantly improving and updating our products. Consequently, pictures, features and specifications in this brochure may differ slightly from current models. Flow rates and pressure ratings may vary due to variances allowed by manufacturers of our machine components. We attempt to keep our machine performance within ± 5% of listed specifications.